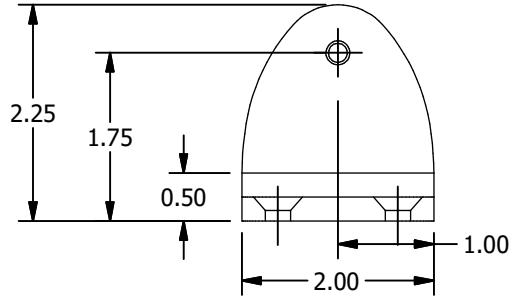
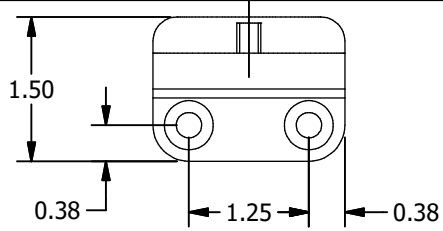
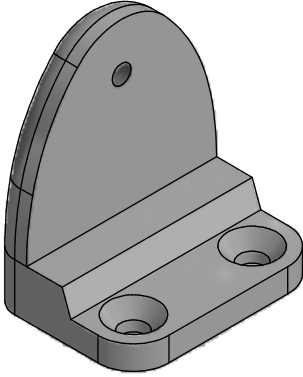
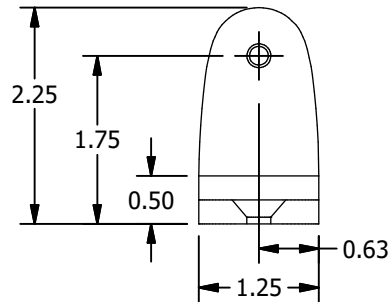
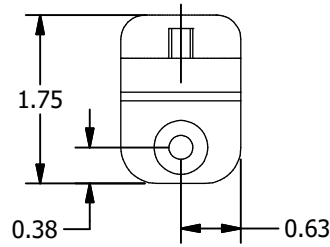
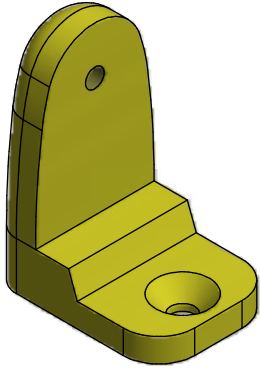


CPFL1

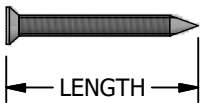


CPFL3

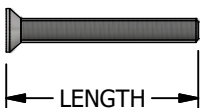


FASTENER OPTIONS FOR CPFL1 & CPFL3:

SPECIFY TOTAL
COUNTER THICKNESS: _____ in.

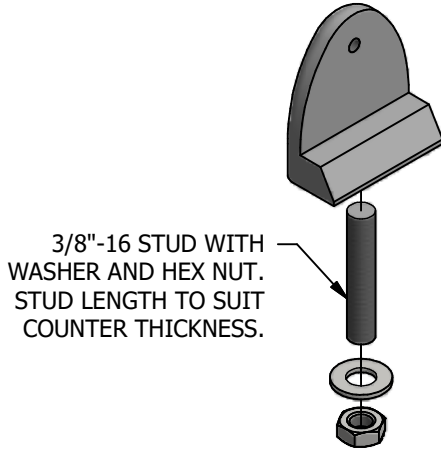


- FLAT HEAD STAINLESS STEEL SHEET METAL SCREW, #12 - TYPE A
 - 1-1/4" 2" 2-1/2"



- FLAT HEAD STAINLESS STEEL MACHINE SCREW, 1/4" - 20 NC
 - 1" 1-1/4" 2"
- INCLUDE HEX NUT AND FLAT WASHER FOR MACHINE SCREW

CPFL2

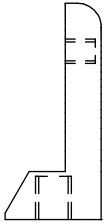
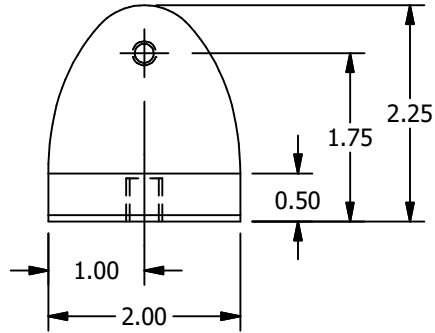
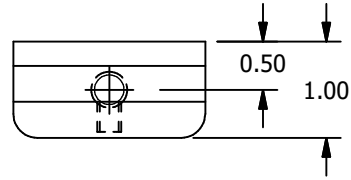


3/8"-16 STUD WITH
WASHER AND HEX NUT.
STUD LENGTH TO SUIT
COUNTER THICKNESS.

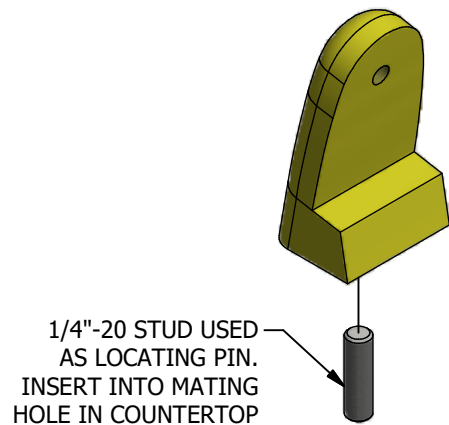
**REQUIRES ACCESS
BELOW COUNTER**

**SPECIFY TOTAL
COUNTER THICKNESS**

_____ in.



CPFL4



1/4"-20 STUD USED
AS LOCATING PIN.
INSERT INTO MATING
HOLE IN COUNTERTOP

