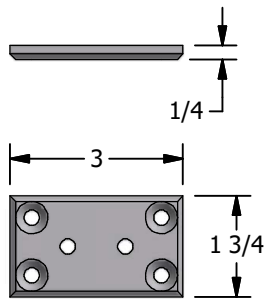
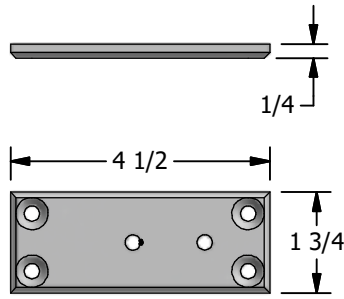


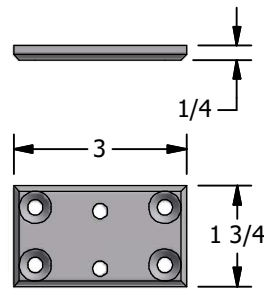
## MOUNTING HARDWARE SPECIFICATIONS



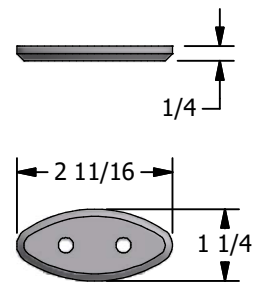
**FL6.1**  
SURFACE-MOUNT



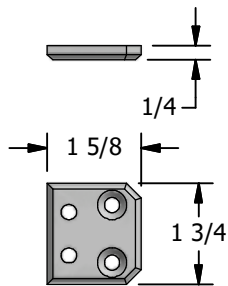
**FL6.5**  
SURFACE-MOUNT  
FOR VGG1.3 ONLY



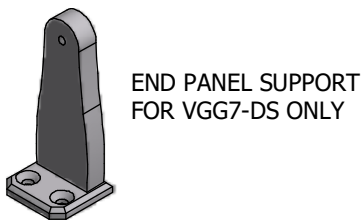
**FL6.2**  
SURFACE-MOUNT



**FL6.3**  
CONCEALED-MOUNT

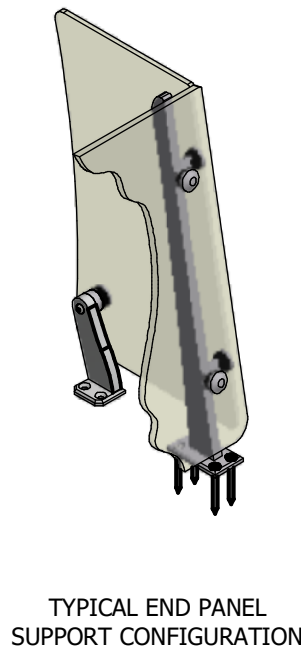
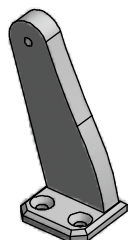


**FL6.4**  
END PANEL  
SUPPORT FLANGE

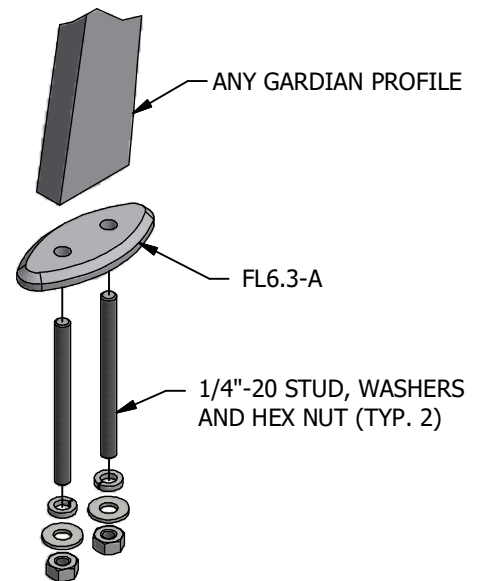


END PANEL SUPPORT  
FOR VGG7-DS ONLY

END PANEL SUPPORT  
FOR ALL OTHER MODELS



TYPICAL END PANEL  
SUPPORT CONFIGURATION



**DETAIL VIEW OF  
CONCEALED MOUNT ASSEMBLY**